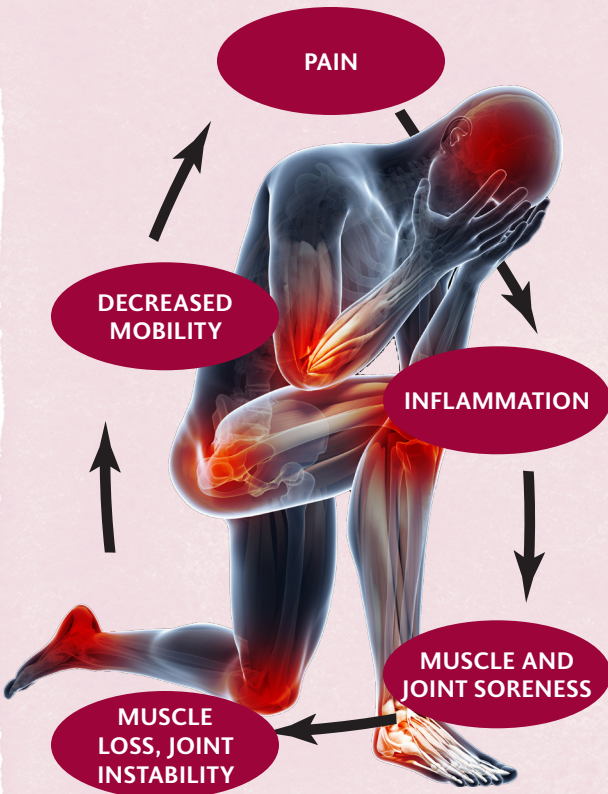


BREAK THE VICIOUS CYCLE OF PAIN AND INFLAMMATION



- ✓ Pain is more than physical
- ✓ Pain is a roadblock for active living
- ✓ Pain can limit your social life
- ✓ Pain can deny you the endorphin rush exercise delivers

IN PAIN?

- Aching back
- Hip discomfort
- Sore knees
- Stiff neck
- Tennis elbow
- Shoulder stiffness
- Ankle pain
- Headache
- Muscle tenderness
- Strains and sprains
- Excessive wear-and-tear

WE'VE GOT YOU COVERED

- ✓ Potency-validated natural ingredients for acute or chronic pain
- ✓ Topical solutions for targeted relief
- ✓ Nutraceuticals for joint pain and inflammation
- ✓ Bioavailable nutrients for connective-tissue maintenance and repair
- ✓ Comprehensive formulas; find the one for you



Proudly Made by Canadians
for Canadians · Buy Local!



newrootsherb.com · To ensure these products are right for you, always read and follow label directions.

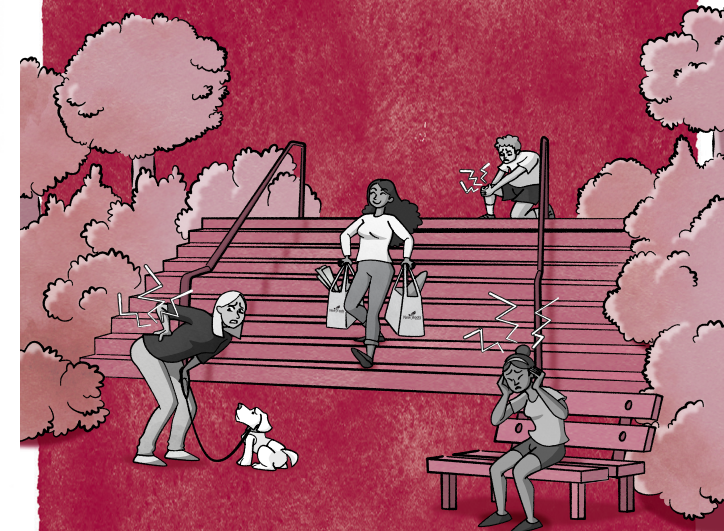
The Only Canadian-Branded Natural Supplement Manufacturer
That Tests All Products in an On-Site, 8,000 sq. ft.,
State-of-the-Art, ISO 17025-Accredited Laboratory

Consult a health-care practitioner to determine the right product to suit your needs. Always read and follow label instructions.

DM0150



DON'T LET PAIN STOP YOU!



PAIN MANAGEMENT MADE POSSIBLE



PAIN ACUTE AND CHRONIC



Pain is the body's alert system letting you know that it is being harmed. It can be due to injury, infection, or chronic connective-tissue degeneration.

White Willow relieves headaches as well as muscular and arthritic pain. It is the original source for the active ingredient of aspirin.

Devil's Claw and **Boswellia** help alleviate pain and swelling of the knees and general osteoarthritis related discomfort.

PEA (palmitoylethanolamide), a naturally occurring fatty acid produced by our bodies in response to pain, is clinically proven for chronic pain relief.

TARGETED TOPICAL RELIEF



Topical analgesics work through direct absorption at the site of soft-tissue damage.

DMSO helps numb the pain related to aches, sprains, and acute bursitis; it penetrates the skin for fast-acting relief.

Body Muscle Massage is a potent pain reliever featuring the soothing effects of arnica, calendula, and more.

Both can be employed after injuries and as a preemptive measure for enhanced mobility.

INFLAMMATION REDUCE AND CLEAR



Inflammation is the physiological response to injury or infection. The increased blood flow, necessary to provide nutrients and remove waste from the site of injury, results in uncomfortable swelling and reduces mobility, often longer than needed.

MSM (methylsulfonylmethane) and **Curcumin** (95% curcuminoids) are a proven solution for reducing inflammation.

Serratiopeptidase, a proteolytic enzyme, breaks down injured tissue for transport from injury sites; consider it "waste management."

CONNECTIVE TISSUE REPAIR AND MAINTAIN

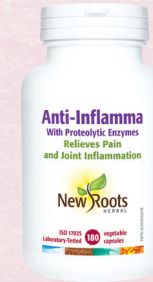
Connective tissue is under constant wear and tear, especially weight-bearing joints such as knees and hips.

Pür Collagen Joint Recovery with hyaluronic acid promotes cartilage production, improving the structural support and elasticity of the joints.

Chondroitin and Glucosamine collectively prevent degradation of the cartilage while stimulating connective-tissue renewal. This promotes healthy bones and cartilage while easing joint pain.



ADVANCED FORMULAS FOR VARIOUS CONDITIONS



Injured? Ice down to reduce the swelling and let **Anti-Inflamma** tame the pain and inflammation. It combines bromelain, curcumin, and quercetin, working synergistically to break down waste to help resolve inflammation, as well as boswellia, to decrease pain perception, letting you get back to daily activities.



Trouble recovering from an injury? **Infla-Heal Plus** contains eight powerful proteolytic enzymes to help reduce inflammation by removing waste protein and excess fluids in tissue, that contribute to swelling and inflammation. Enteric-coated to protect the delicate enzymes from harsh stomach acid.



Daily activities causing you discomfort? **Joint Pain Relief** is formulated with NEM™ (natural eggshell membrane), boswellia, curcumin, and devil's claw to support joint health, improve mobility, and reduce pain and stiffness, providing relief for weight-bearing joints, especially knees and hips.



Joint "wear and tear" wearing you down? **Joint-Tissu&MSM** supports connective-tissue renewal for relief from joint pain associated with osteoarthritis, while rebuilding connective tissue. Formulated with glucosamine to help produce cartilage, as well as MSM and devil's claw to help manage joint-related pain.

**CHOOSE THE FORMULA
TO BEST SUIT YOUR NEEDS!**